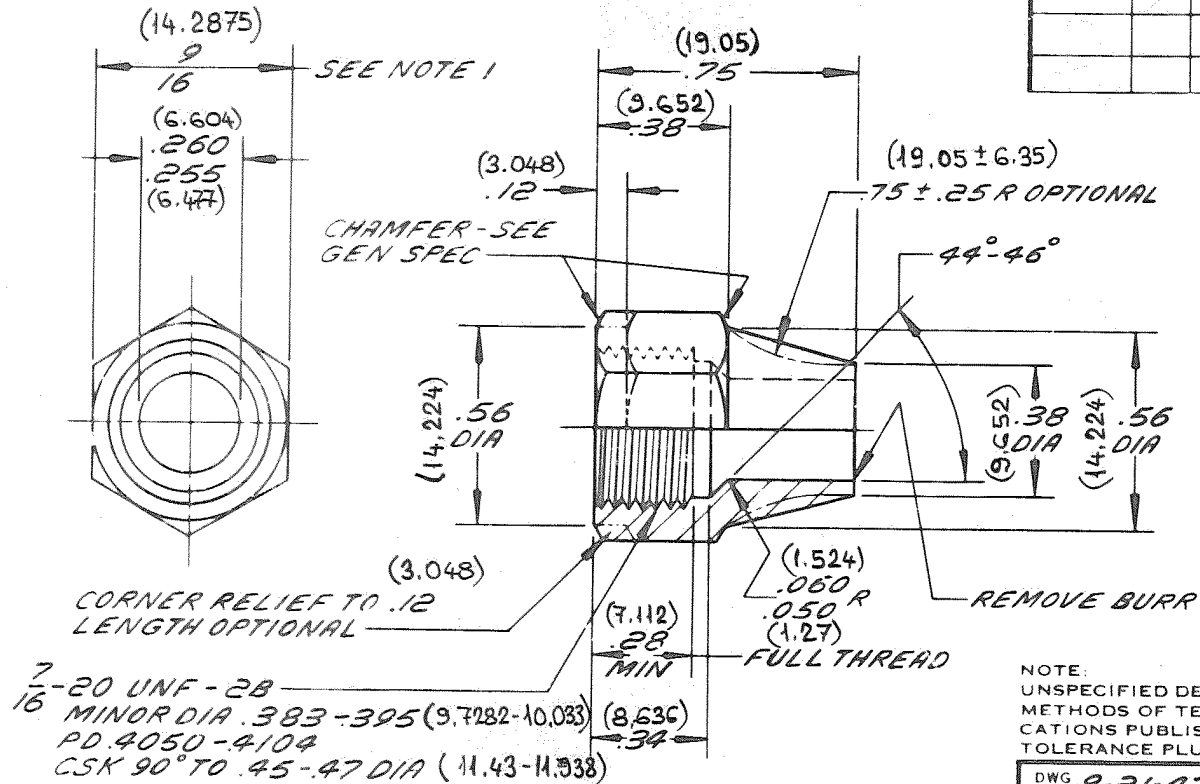


ENGINEERING STANDARDS SECTION

GENERAL MOTORS CORPORATION - G. M. TECHNICAL CENTER - WARREN, MICHIGAN

NOTE 1:
COMMERCIAL BAR STOCK TOLERANCES SHALL APPLY.



NO.

116452

DATE	SYM	REVISION RECORD	AUTHORITY	DR	CHK
2-3-72	E	REDRAWN & REVISED		RD	

Yer No: 1718196
Sira No

NOTE:
UNSPECIFIED DETAIL WITH RESPECT TO DIMENSIONS, MATERIAL, METHODS OF TEST, ETC., MUST CONFORM TO GENERAL SPECIFICATIONS PUBLISHED IN G M ENGINEERING STANDARDS. TOLERANCE PLUS OR MINUS .010 UNLESS OTHERWISE SPECIFIED.

DWG. DATE 8-21-47	SCALE	DR CFS
REFERENCE	CHK	APPD
MATERIAL SPEC	BRASS - SAE CA360 (HALF HARD), CA345 OR CA350 BAR STOCK OR SAE CA377 FORGINGS	
NAME	NUT - 45° FLARED TUBE	
DESCRIPTION 1/4 SHORT STYLE	PART NO.	116452
FINISH PLAIN		