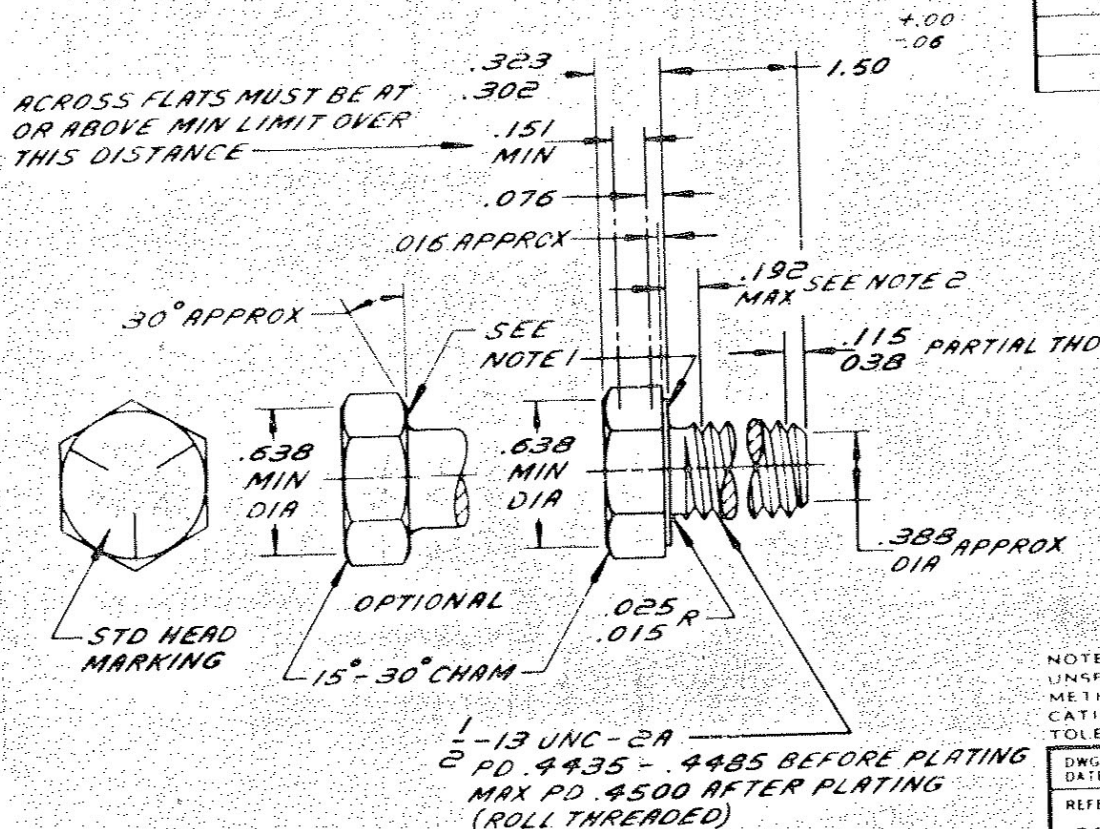


ENGINEERING STANDARDS SECTION

GENERAL MOTORS CORPORATION - G. M. TECHNICAL CENTER - WARREN, MICHIGAN



NOTES:

1. AXIS OF HEAD MUST BE CONCENTRIC WITH AXIS OF BOLT WITHIN .045 TIR. BEARING FACE SHALL BE FLAT WITH DIA OF .675 - .750 AND SQUARE WITH BOLT AXIS WITHIN 2° (REF-.024 MAX TOTAL RUNOUT).
2. DIA OF UNTHREADED SHANK TO BE .443 - .500.

NO. 180177					
DATE	SYM	REVISION RELEV	AUTHORITY	DR	PLW
6-1-69	C	REDRAWN & REVISED		RD	

NOTE
UNSPECIFIED DETAIL WITH RESPECT TO DIMENSIONS, MATERIAL METHODS OF TEST, ETC. MUST CONFORM TO GENERAL SPECIFICATIONS PUBLISHED IN G.M. ENGINEERING STANDARDS TOLERANCE PLUS OR MINUS .010 UNLESS OTHERWISE SPECIFIED

DWG DATE 10-2-40	SCALE	DR CFS
REFERENCE PLAIN No 179885		CHK
		APPD
MATERIAL SPEC GM 280-M STEEL		
NAME BOLT-HEXAGON		

DESCRIPTION 1/2-13x1/2 CL 2A
FINISH ZINC

PART NO. 180177
