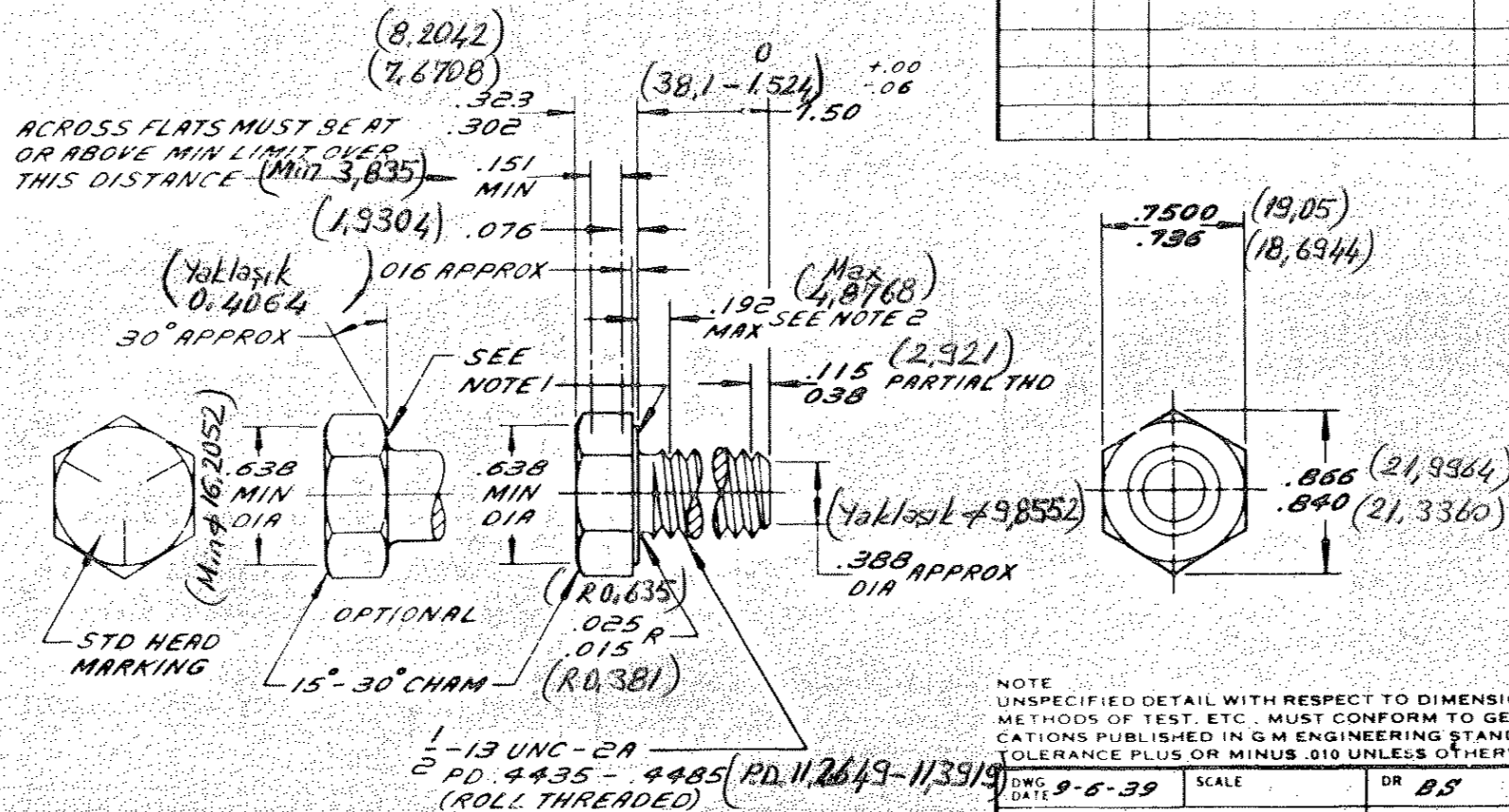


ENGINEERING STANDARDS SECTION

GENERAL MOTORS CORPORATION - G. M. TECHNICAL CENTER - WARREN, MICHIGAN

179885

DATE	SYM	REVISION RECORD	AUTHORITY	DR	CHK
3-1-69	E	REDRAWN & REVISED		SS	



NOTES:

1. AXIS OF HEAD MUST BE CONCENTRIC WITH AXIS OF BOLT WITHIN .045 TIR. BEARING FACE SHALL BE FLAT WITH DIA OF .675 - .750 AND SQUARE WITH BOLT AXIS WITHIN 2° (REF-.024 MAX TOTAL RUNOUT).
2. DIA OF UNTHREADED SHANK TO BE .443 - .500.

NOTE
UNSPECIFIED DETAIL WITH RESPECT TO DIMENSIONS. MATERIAL METHODS OF TEST, ETC. MUST CONFORM TO GENERAL SPECIFICATIONS PUBLISHED IN G M ENGINEERING STANDARDS TOLERANCE PLUS OR MINUS .010 UNLESS OTHERWISE SPECIFIED

DWG DATE 9-6-39	SCALE	DR BS
REFERENCE	CHK RD	APPD
MATERIAL SPEC	GM 280-M STEEL	
NAME	BOLT-HEXAGON	
DESCRIPTION 1/2-13x1 1/2 CL 2A	PART NO.	179885
FINISH PLAIN		

Yer No. 1 Sıra No
1718 / 324