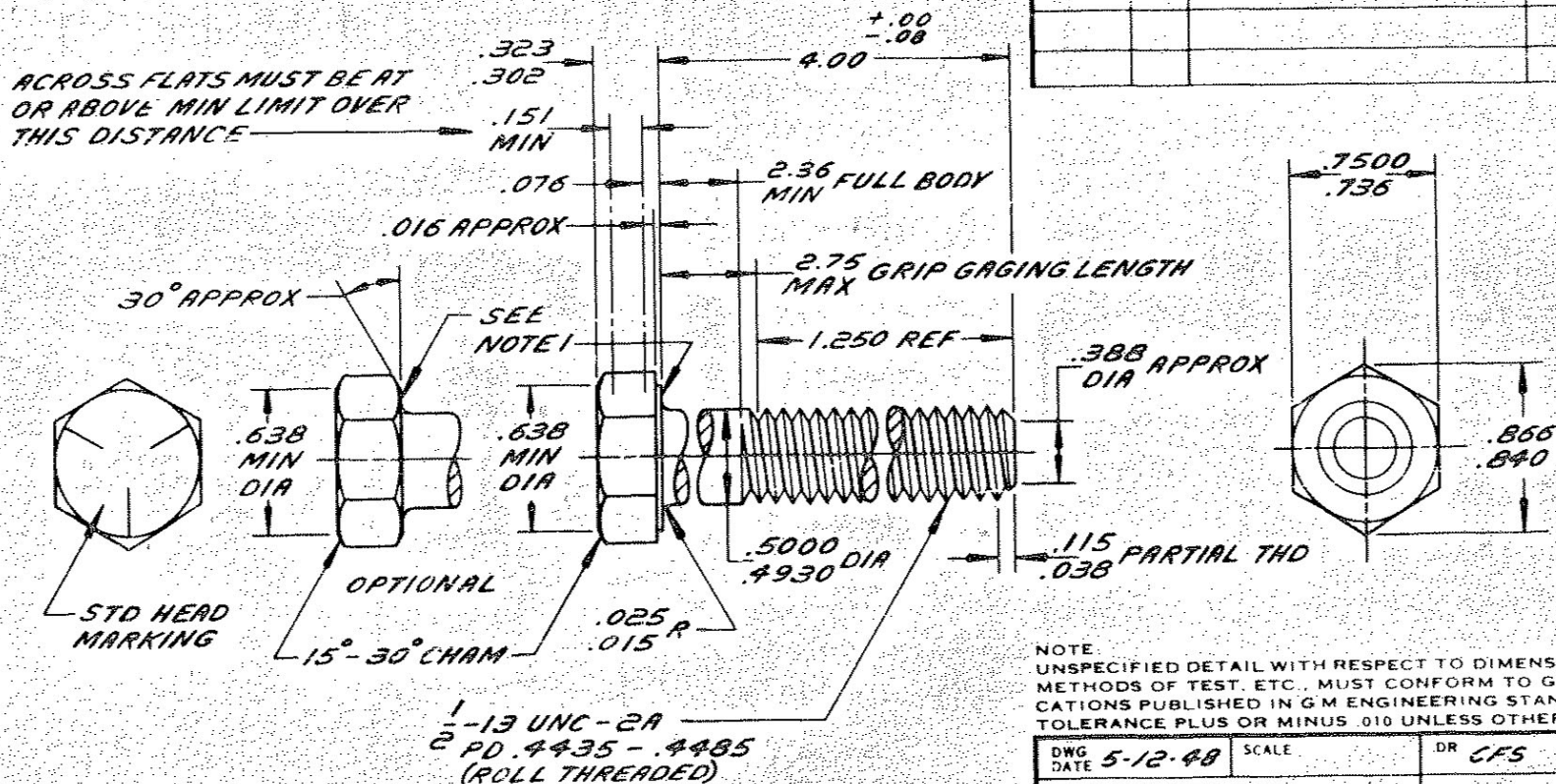


ENGINEERING STANDARDS SECTION

GENERAL MOTORS CORPORATION - G. M. TECHNICAL CENTER - WARREN, MICHIGAN



NOTES:

1. AXIS OF HEAD MUST BE CONCENTRIC WITH AXIS OF BOLT WITHIN .045 TIR. BEARING FACE SHALL BE FLAT WITH DIA OF .675 - .750 AND SQUARE WITH BOLT AXIS WITHIN 2° (REF-.024 MAX TOTAL RUNOUT).

NO.

179897

DATE	SYM	REVISION RECORD	AUTHORITY	DR	CHK
3-1-69	E	REDRAWN & REVISED		RD	

NOTE:
UNSPECIFIED DETAIL WITH RESPECT TO DIMENSIONS, MATERIAL METHODS OF TEST, ETC., MUST CONFORM TO GENERAL SPECIFICATIONS PUBLISHED IN G.M. ENGINEERING STANDARDS TOLERANCE PLUS OR MINUS .010 UNLESS OTHERWISE SPECIFIED

DWG DATE 5-12-48	SCALE	DR CFS
REFERENCE		CHK
		APPD
MATERIAL SPEC	GM 280-M STEEL	
NAME	BOLT-HEXAGON	
PART NO.	179897	

Yr No Site No
1718/330

DESCRIPTION 1-13x4" CL 2A
FINISH PLAIN