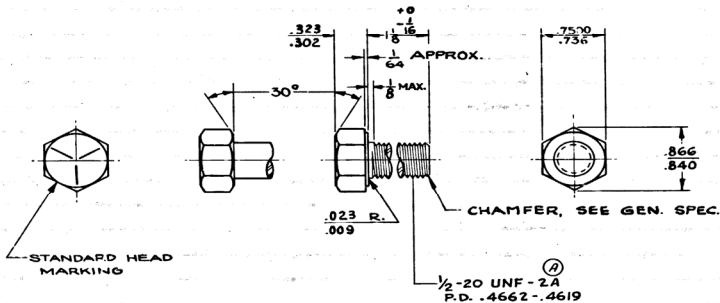


GENERAL MOTORS ENGINEERING STANDARDS
DETROIT 2, MICHIGAN

181428



MUST CONFORM TO GENERAL SPECIFICATIONS
PUBLISHED IN G. M. ENGINEERING STANDARDS.
TOLERANCE $\pm .010$ UNLESS OTHERWISE SPECIFIED

6-28-54	D	NOTE REMOVED	S.S.	DESCRIPTION	FINISH	MATERIAL
10-1-52	C	REVISED TO NEW STDG.	L.H.	1/2-20 x 1 1/8 CL. 2A	PLAIN	GM 280-M STEEL
3-9-49	B	NOTE ADDED	E.S.	NAME		
3-9-49	A	THREAD WAS CL. 3	E.S.			
10-28-47		REVISED & REDRAWN	DAW.	HEXAGON BOLT		181428
DATE	LET.	RECORD	BY			

2-55
K-55