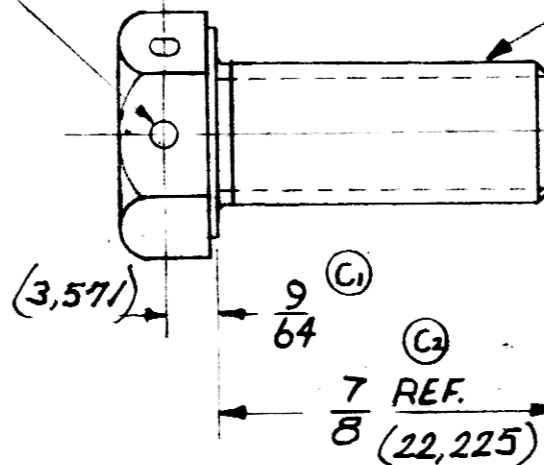
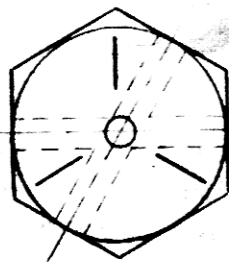


8028314

TOLERANCES ON ALL DIMENSIONS NOT
SPECIFIED ON THE DRAWING TO BE IN
ACCORDANCE WITH A.I.-2100.BREAK ALL SHARP
CORNERS UNLESS
OTHERWISE SPECIFIED.COUNTERSINK ALL TAPPED
HOLES 118° X ONE THRD DEEP.SURFACE FINISH SPECS.
IS IN ACCORDANCE
WITH G.M. ENGR. STDS.(2 Adet ϕ 1.778 deLk)
NO.50 (.070 DIA.) DRILL
2 HOLESC₃ $\frac{3}{8}$ - 24 UNF-2A REF.

1708 17

RECORDED

				MATERIAL 181361				NAME OF PART		PART NO.		IT. NO.			
				DR. T. LONG CK.				DATE 9-3-37		ELECTRO-MOTIVE DIVISION GENERAL MOTORS CORPORATION LA GRANGE, ILLINOIS, U.S.A.					
				SUP.						BOLT-3/8-24 DR HEX					
				WELD.				MOD. ENGR.		DATE OF PRINT		PART NO. 8028314			
				MAT'L.				ENGR.							
B6303				C ₃ WAS NF-CL 3 C ₂ "REF" ADDED C ₁ WAS 1/8 FROM TOP C DET. DIMS. REM'D				10-25-65				E. BROWN			
R. F. C. NO.				REV. LET.				REVISION				DATE			
BY				CK.				APV'D.				FIRST USED ON			