

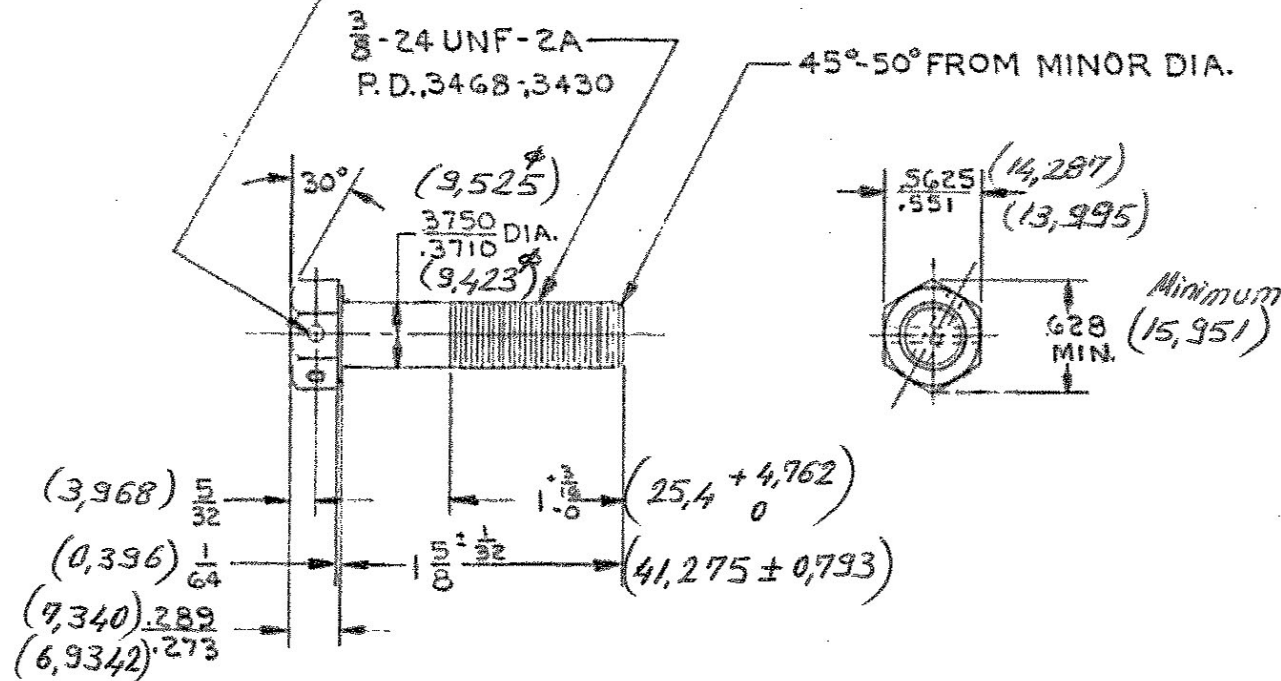
# 8167141

PERMISSIBLE VARIATION ON COMMON  
FRACTION DIMENSIONS TO MACHINED SURFACES  
TO BE  $\pm 0.010$  UNLESS OTHERWISE SPECIFIED.  
FABRICATION TOLERANCE.

BREAK ALL SHARP CORNERS  
UNLESS OTHERWISE SPECIFIED.

COUNTERSINK ALL TAPPED  
HOLES  $118^\circ \times$  ONE THRD DEEP

NO.50(.070 DIA.) DRILL THRU  
2-HOLES



$\frac{3}{8}$ -24 NF-3 OPTIONAL  
P.D. 3479-3455

1/18 1/26  
1/18 1/26

RECORDED

EMS 82

MAY BE MADE FROM 181376

				NO. REQUIRED PER ASSEMBLY		MATERIAL G.M. 280-M STEEL		NAME OF PART		PART NO.		IT. NO.	
				DR. <i>N. Murr</i>		DATE 7-27-50		ELECTRO-MOTIVE DIVISION GENERAL MOTORS CORPORATION LA GRANGE, ILLINOIS, U.S.A.					
				CH. CK. <i>T. Kline</i>		DATE 7-28-50							
				WELD. <i>W. Mark</i>		CH. DR. <i>W. Mark</i>		BOLT- $\frac{3}{8}$ -24 DR HEX					
				MAY 18-50		8-17-50							
H. F. C. NO.				REV. LET.		REVISION		DATE		BY		CK. APVD.	
FIRST USED ON				567 B				DATE OF PRINT		PART NO.		8167141	