

8487883

TOLERANCES ON ALL DIMENSIONS NOT SPECIFIED ON THE DRAWING TO BE IN ACCORDANCE WITH A.I.-2100.

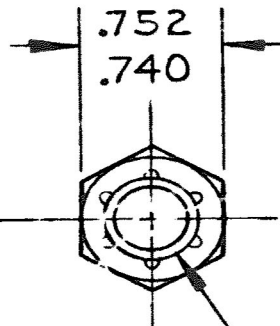
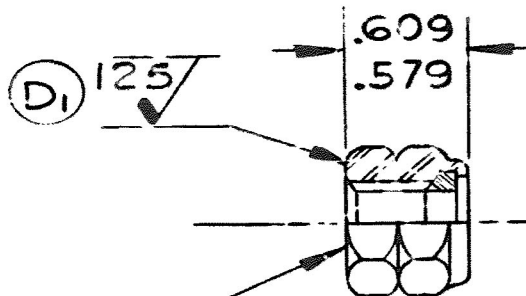
BREAK ALL SHARP CORNERS UNLESS OTHERWISE SPECIFIED

COUNTERSINK ALL TAPPED HOLES 118° X ONE THR'D DEEP.

SURFACE FINISH SPECS. IS IN ACCORDANCE WITH G.M. ENGR STDS.

PREVAILING TORQUE LIMITS
INCH LBS.

MAX.	MIN.	MIN.
1ST. ON	1ST. OFF	5TH. OFF
200	30	20



1/2-20 UNF-2B THD.

ROCKWELL "C" 24-32. (C2)

(C1)
THIS FACE MUST BE SQUARE WITH AXIS OF THREADS WITHIN .009 TOTAL

RECORDED

ENGINEERING APPROVAL
OF SOURCE REQUIRED

QUALITY CONTROL E.T.I. 506
FOR MANUFACTURING

NO REQ.	NAME OF PART		PART NO.	IT. NO.
MATERIAL GM 301-M STEEL PLAIN FINISH NON-METALLIC INSERT		ELECTRO-MOTIVE DIVISION GENERAL MOTORS CORPORATION LA GRANGE, ILLINOIS, U.S.A.		
DR. BOGETT	DATE 12-23-64	NUT- 1/2-20 SLFLKG		
CK. RICCI	DATE 12-23-64			
SUP. CHRISTIENSON	CH. DR. 2-15-65			
WELD.	MOD. ENGR. CAULTON			
MAT'L	ENGR. HEILENBACH			
FIRST USED ON PROJ. 97752		PART NO. 8487883		

70588	D1	MICRO FINISH ADDED. "FOR MFG BLOCK" ADDED	11-4-75	NM	AHS	#11
	C2	WAS 26-36. NOTE ADDED, 2 PLCS. MAT'L WAS "STL.-PLAIN FIN. NON-METALLIC INSERT." REINSTATED, WAS DISCONTINUED.	9-19-73	G.P.		
56497	C					
R.F.C. NO.	REV. LET.	REVISION	DATE	BY	CK.	APV'D