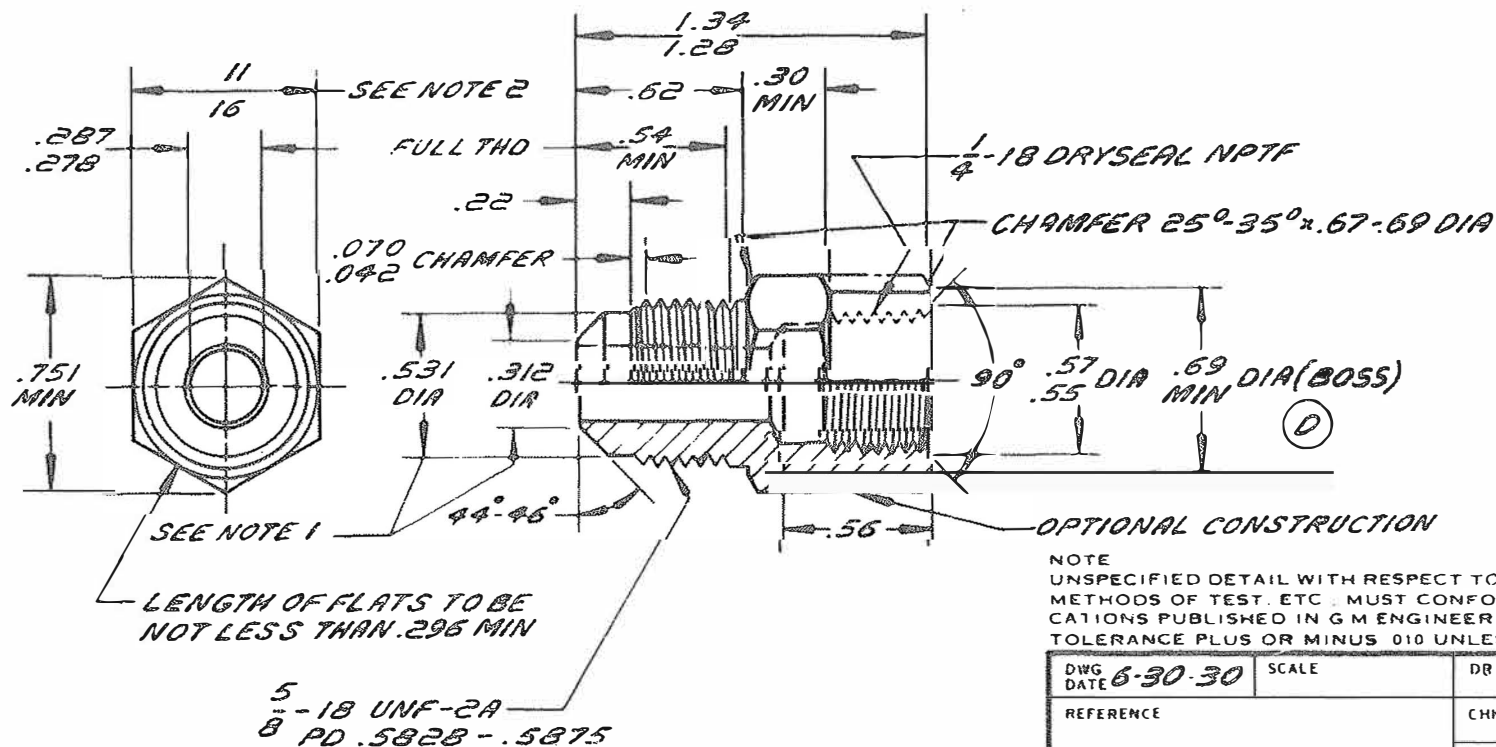


GENERAL MOTORS CORPORATION - G. M. TECHNICAL CENTER - WARREN, MICHIGAN

1. NOSE DIA MUST BE CONCENTRIC WITH TWO PD WITHIN .010 TIR.
2. COMMERCIAL BAR STOCK TOLERANCES SHALL APPLY.

1 2 1 3 2 3

DATE	SYM	REVISION RECORD	AUTHORITY	DR	CHK
6-11-71	C	REDRAWN & REVISED		RD	AKH
5-25-72	D	WAS .67-.69 DIA		RD	AKH



NOTE
UNSPECIFIED DETAIL WITH RESPECT TO DIMENSIONS, MATERIAL,
METHODS OF TEST, ETC., MUST CONFORM TO GENERAL SPECIFI-
CATIONS PUBLISHED IN G M ENGINEERING STANDARDS
TOLERANCE PLUS OR MINUS .010 UNLESS OTHERWISE SPECIFIED.

DWG DATE 6-30-30	SCALE	DR CFS
REFERENCE		CHK 1 21
		APPD

SAE CA360 (HALF HARD), SAE CA345
OR SAE CA350 BRASS

CONNECTOR-45° FLARED TUBE FEMALE

YET NO	SURE NO
1718	164

DESCRIPTION	3 B
FINISH	PLAIN

1 2 1 3 2 3