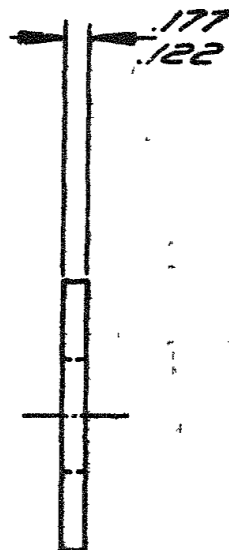
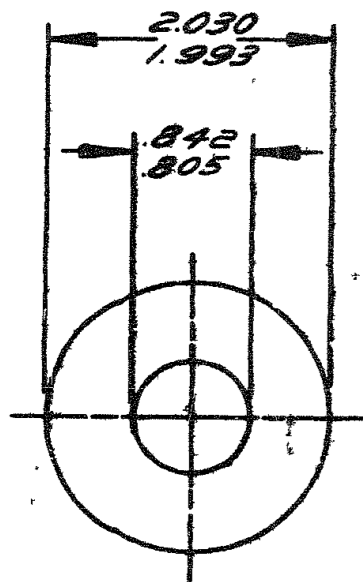


# ENGINEERING STANDARDS SECTION

GENERAL MOTORS CORPORATION - G. M. TECHNICAL CENTER - WARREN, MICHIGAN

3-69  
RD



NO.

106268

DATE	SYM.	REVISION RECORD	AUTHORITY	DR.	CHK.
8-18-59	B	REDRAWN & REVISED		ES	R.D.

Ver No	Sira No
	1267

UNSPECIFIED DETAIL WITH RESPECT TO DIMENSIONS, MATERIAL, METHODS OF TEST, ETC., MUST CONFORM TO GENERAL SPECIFICATIONS PUBLISHED IN G M ENGINEERING STANDARDS. TOLERANCE PLUS OR MINUS .010 UNLESS OTHERWISE SPECIFIED.

DWG. DATE	5-3-26	SCALE		DR.	ES
REFERENCE				CHK.	R.D.
				APPR.	
MATERIAL SPEC.					
STEEL					
NAME					
WASHER - TYPE A FLAT					
DESCRIPTION				PART NO.	
.812 x 2.000 x .148				106268	
FINISH					
PLAIN					