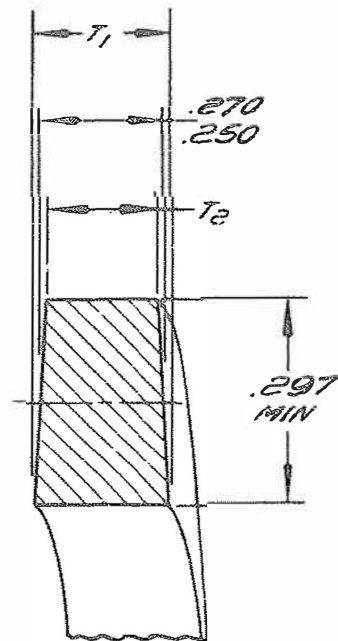


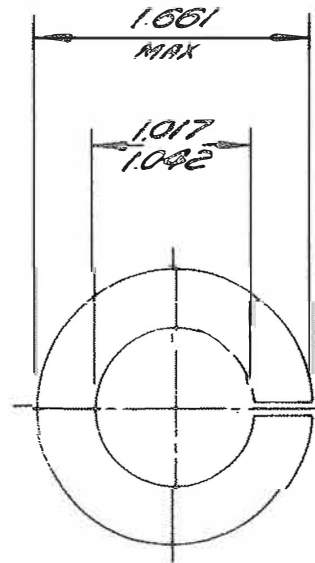
ENGINEERING STANDARDS SECTION

GENERAL MOTORS CORPORATION - G. M. TECHNICAL CENTER - WARREN, MICHIGAN

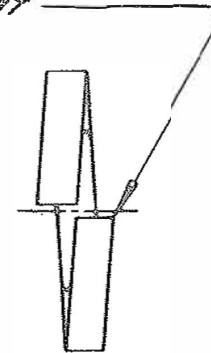
$$T_1 \text{ MINUS } T_2 = .0190 - .0095$$



ENLARGED SECTION



GAP AND RELATIONSHIP OF ENDS
TO BE SUCH AS TO PREVENT
WASHERS TANGLING AND INSURE
THAT WASHERS WILL COMPRESS
FLAT



Ver No 1218 / 162
Sira No

NOTE:

UNSPECIFIED DETAIL WITH RESPECT TO DIMENSIONS MATERIAL, METHODS OF TEST, ETC. MUST CONFORM TO GENERAL SPECIFICATIONS PUBLISHED IN G.M. ENGINEERING STANDARDS TOLERANCE PLUS OR MINUS .010 UNLESS OTHERWISE SPECIFIED

DWG DATE 2-26-48	SCALE	DR RLS
REFERENCE	CK.	APPR.
MATERIAL SPEC. STEEL - SEE NOTE ROCKWELL C45-53		
NAME WASHER - REGULAR HELICAL SPRING LOCK		
DESCRIPTION 1" (1.000)	PART NO. 121326	
FINISH PLAIN		