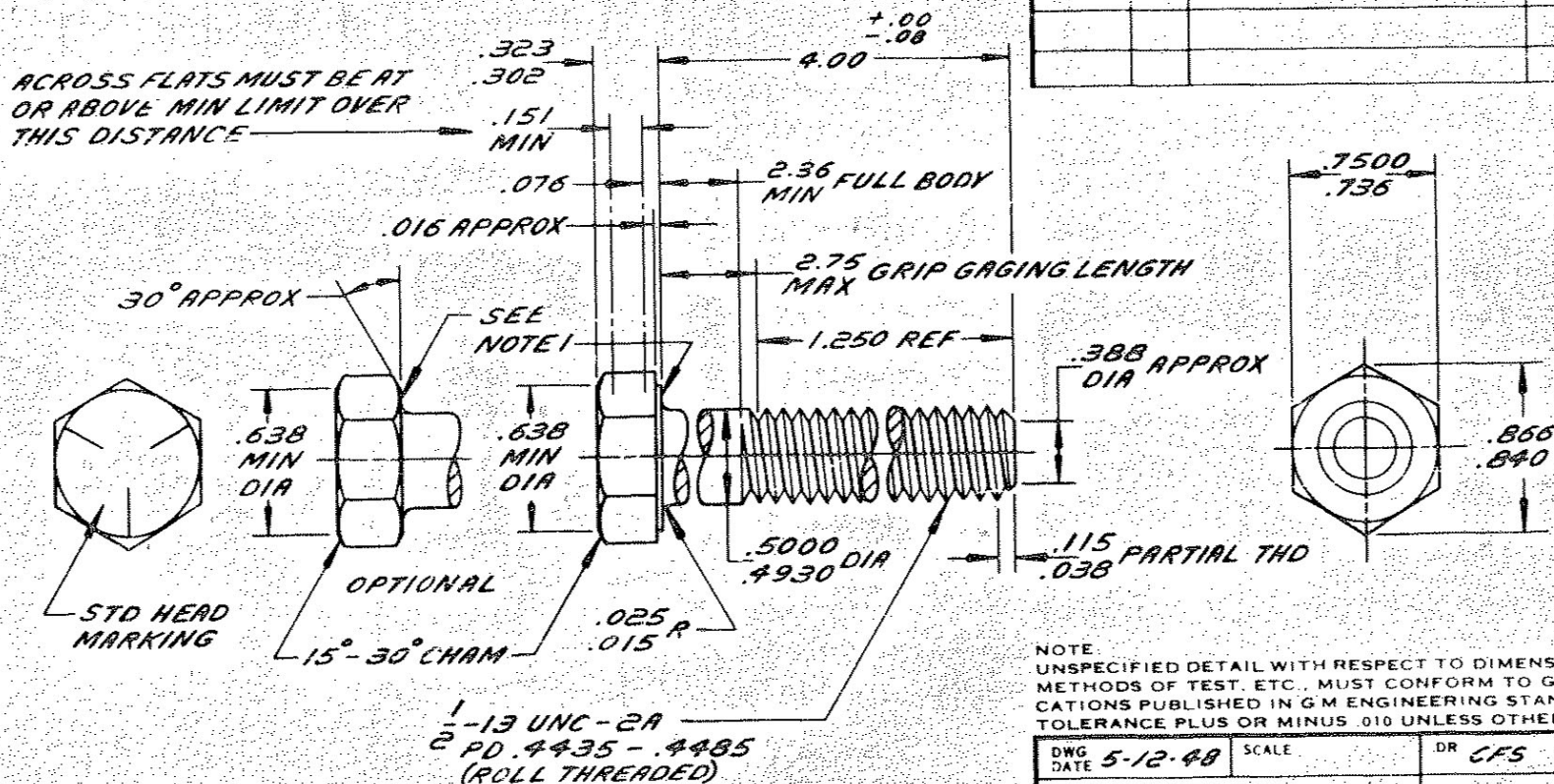


## ENGINEERING STANDARDS SECTION

GENERAL MOTORS CORPORATION - G. M. TECHNICAL CENTER - WARREN, MICHIGAN



## NOTES:

1. AXIS OF HEAD MUST BE CONCENTRIC WITH AXIS OF BOLT WITHIN .045 TIR. BEARING FACE SHALL BE FLAT WITH DIA OF .675 - .750 AND SQUARE WITH BOLT AXIS WITHIN 2° (REF-.024 MAX TOTAL RUNOUT).

Yr No | Site No  
1718/330

DESCRIPTION 1-13x4" CL 2A  
FINISH PLAIN

NO. 179897					
DATE	SYM	REVISION RECORD	AUTHORITY	DR	CHK
3-1-69	E	REDRAWN & REVISED		RD	

DWG DATE 5-12-48	SCALE	DR CFS
REFERENCE		CHK
		APPD
MATERIAL SPEC		
GM 280-M STEEL		
NAME		
BOLT-HEXAGON		
PART NO.		
179897		