

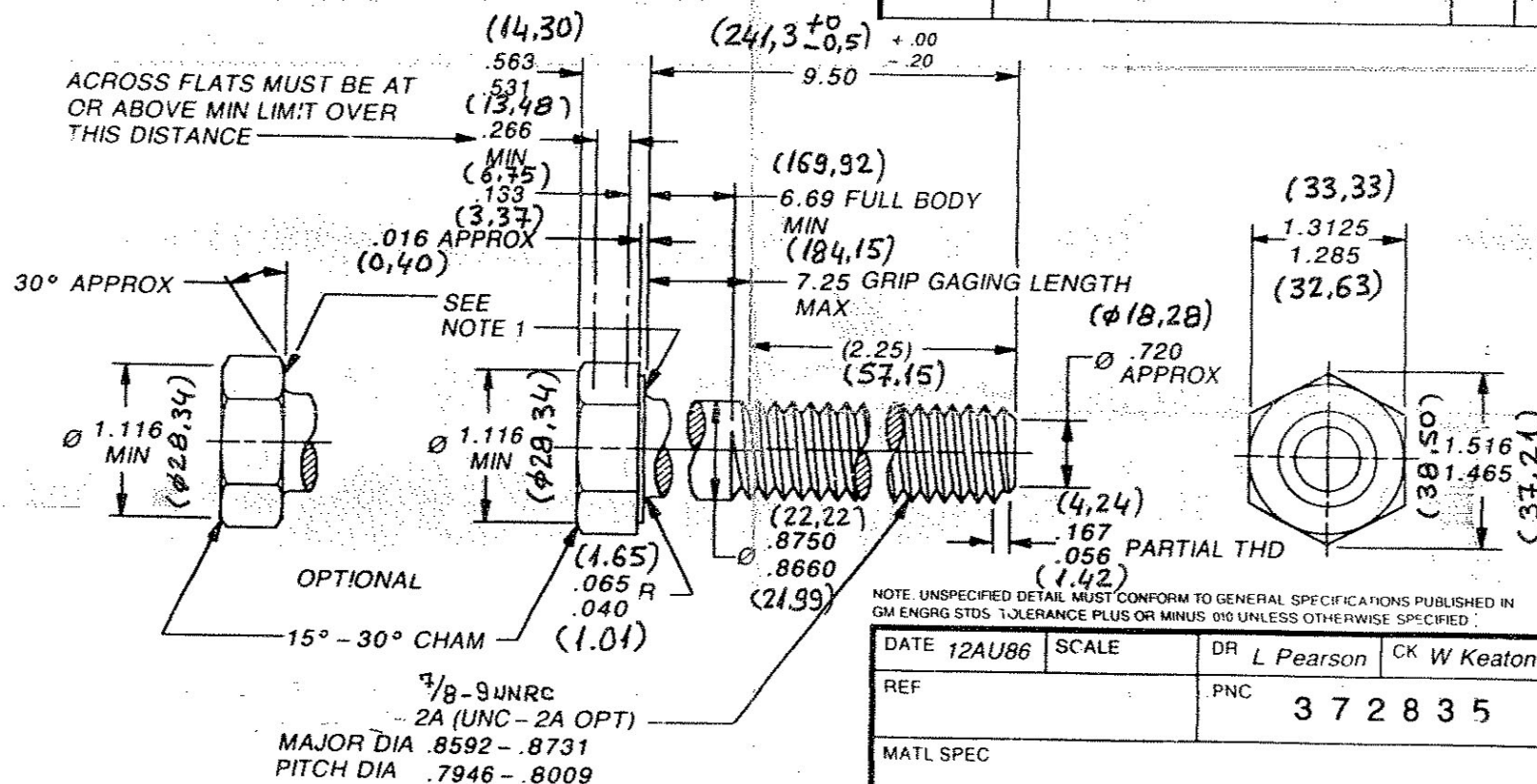
NOTES:

1. AXIS OF HEAD MUST BE CONCENTRIC WITH AXIS OF BOLT WITHIN .079 TIR. BEARING FACE SHALL BE FLAT WITH A DIA OF 1.181 - 1.312 AND SQUARE WITH BOLT AXIS WITHIN 2° (REF-.041 MAX TOTAL RUNOUT).

NO

9 4 4 2 0 6 4

DATE	SYM	REVISION RECORD	DR	CK
	A	DIF. 2243'e göre 02.03.2006		
	B	DIF. 2389'a göre 30.04.2007		



DATE 12AU86	SCALE	DR L Pearson	CK W Keaton
REF		PNC	3 7 2 8 3 5
MATL SPEC			
GM260M STEEL			
TS 230.010			
NAME		BOLT - HEXAGON	
PART NO		Yer No Sıra No	
		15716	
9 4 4 2 0 6 4			

DESCR	7/8 - 9 x 9 1/2	CL 2A
FINISH	PLAIN	