

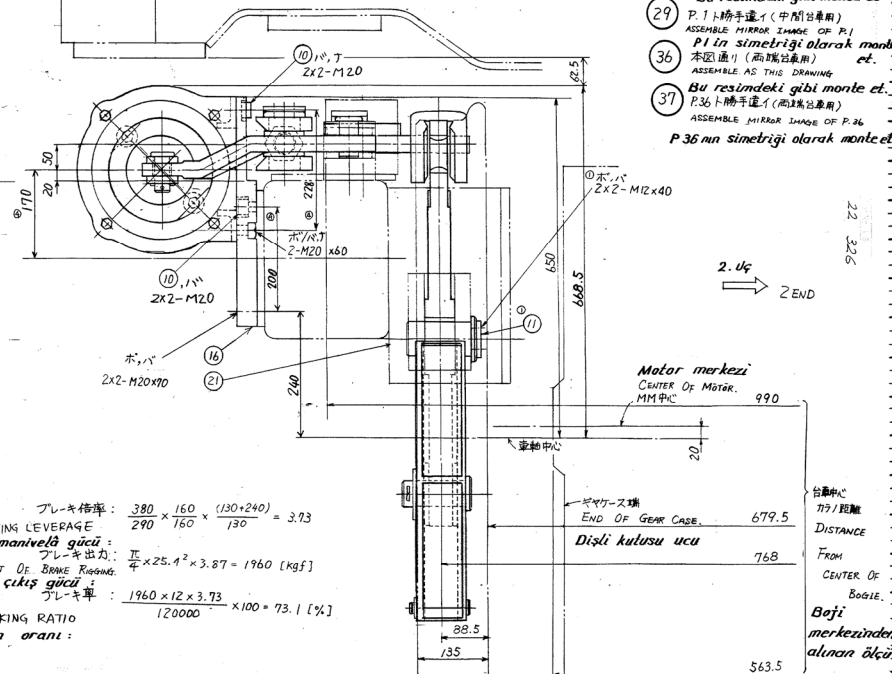
フレーキ倍率:  $\frac{380}{290} \times \frac{160}{150} \times \frac{(130+240)}{130} = 3.73$   
 BRAKING LEVERAGE  
**Fren manivela gücü:**  $\frac{\pi}{4} \times 25.1^2 \times 3.87 = 1960 \text{ [kgf]}$   
 フレーキ出力:  $\frac{\pi}{4} \times 25.1^2 \times 3.87 = 1960 \text{ [kgf]}$   
 OUTPUT OF BRAKE LEVER  
**Fren çıkış gücü:**  $\frac{1960 \times 12 \times 3.73}{120000} \times 100 = 73.1 \text{ [%]}$   
 フレーキ力  
 BRAKING RATIO  
**Fren oranı:**

1) 本図通り (中間台車用)  
ASSEMBLE AS THIS DRAWING  
*BU resimdeki gibi monte et*

29) P.1 手勝手運 (中間台車用)  
ASSEMBLE MIRROR IMAGE OF P.1  
*P.1 in simetrigi olarak monte et.*

36) 本図通り (両端台車用)  
ASSEMBLE AS THIS DRAWING  
*BU resimdeki gibi monte et.*

37) P.36 手勝手運 (両端台車用)  
ASSEMBLE MIRROR IMAGE OF P.36  
*P.36 nun simetrigi olarak monte et*



Liste no: L-A 0665

1C3T0371