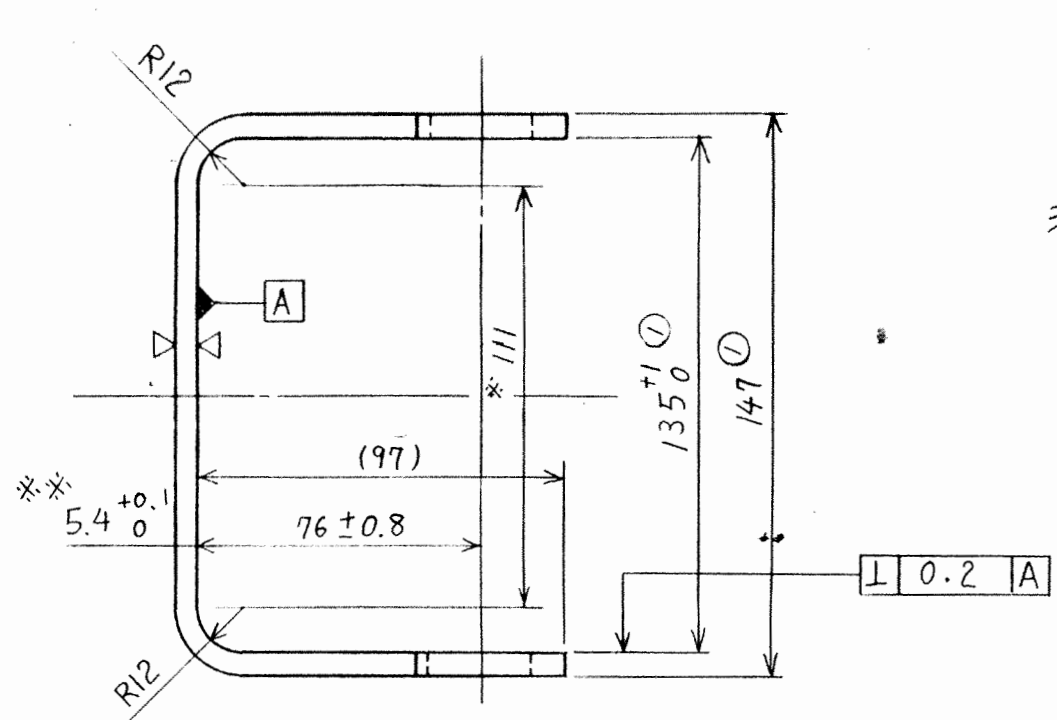
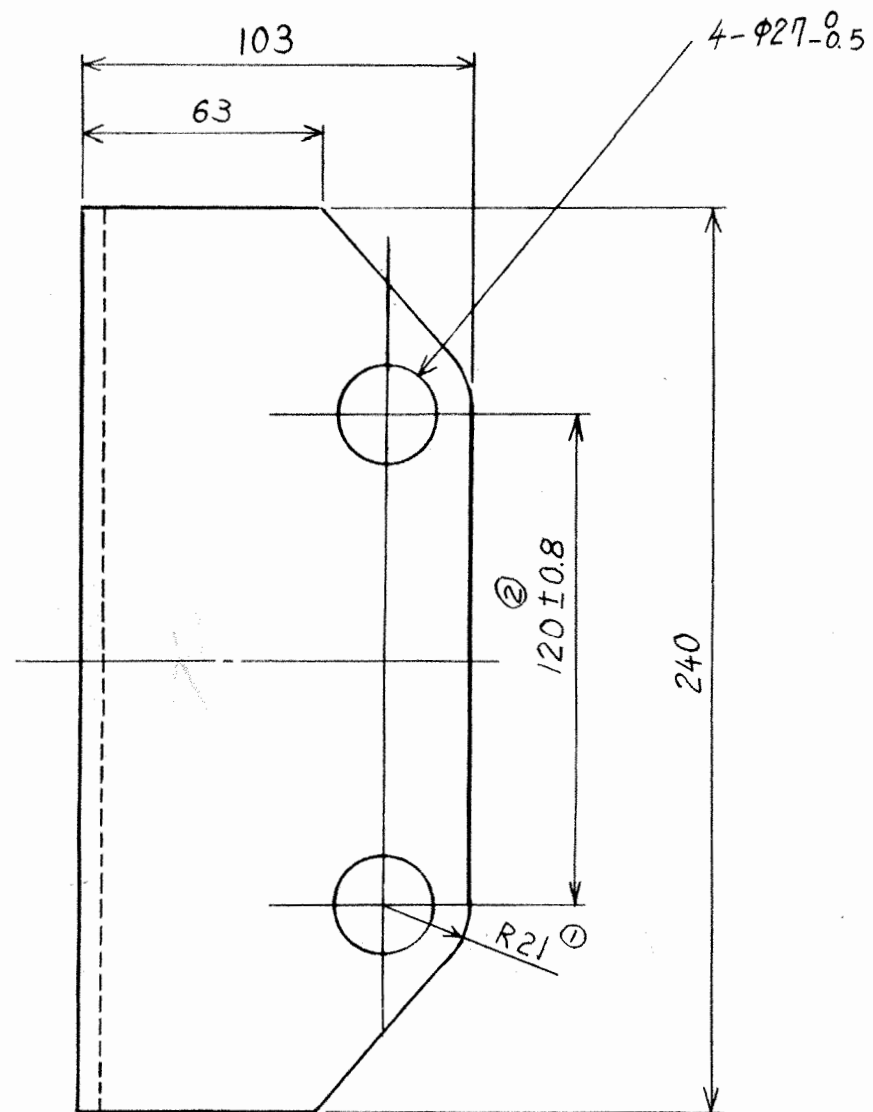


AŞINMA PLAKASI		調査 85.12.6	利 徳田 85.12.5	HRU-BBG	2C3T0471	G つけ	
設計 85.12.2		草 製図 85.12.2	軸箱守スリ板	TCDD	G-NO.		1
P NO.	手配コード	品名記号	形 格 記 事	型	材 料	処 理	1 2 3 4 5 6 検査 立金 用済 重量
1	2C3T0471P001	HRU-BBG	[軸箱守スリ板]		SHN80	NAS-I	
2							
3							
4							
5							
6							



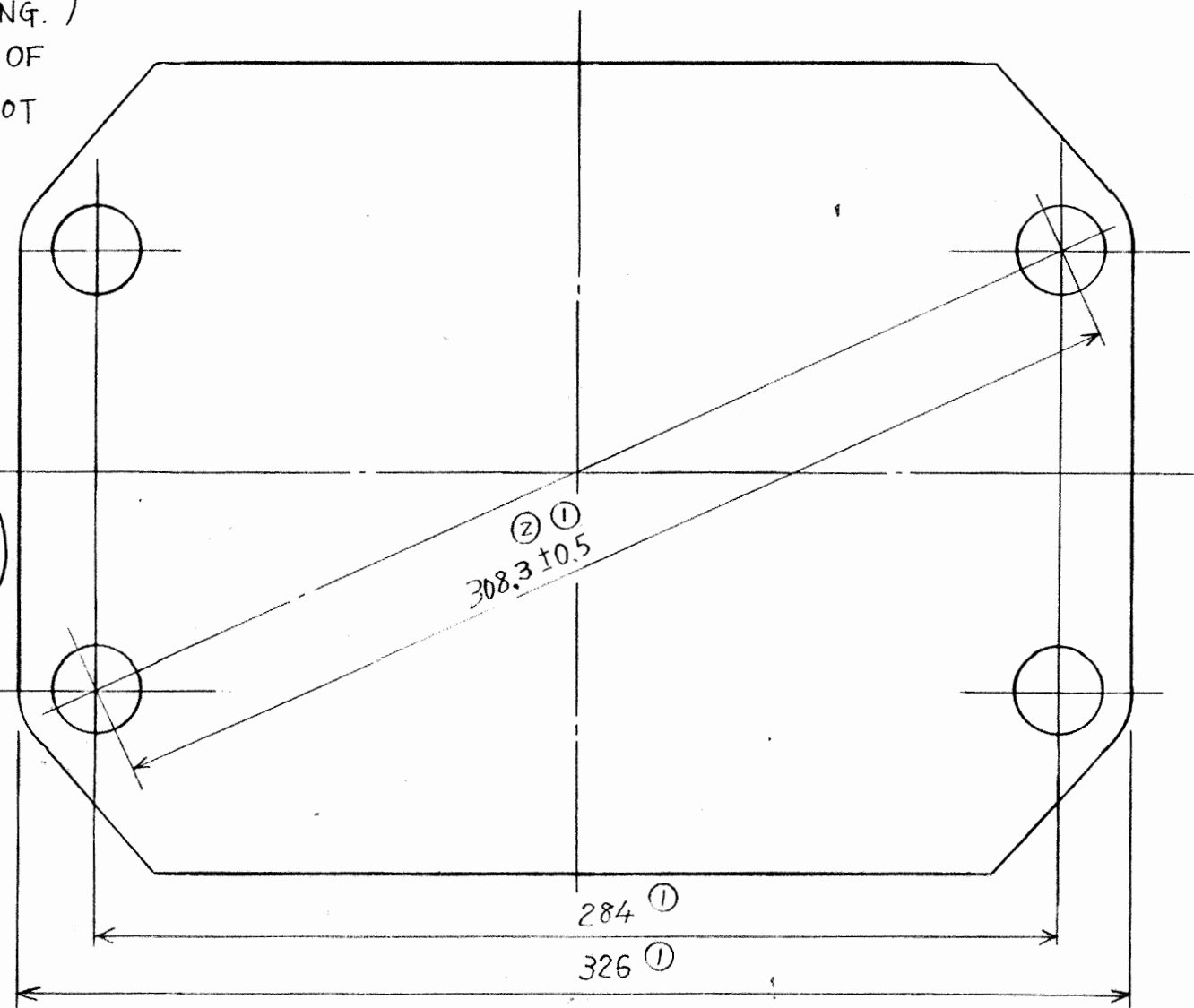
- ① t6
- 注 1. ※印 111mm 平面ノット。
(製缶時) 平面度 1mm 以下, ▽加工後 1 平面度 0.2mm 以下スル。
2. 製缶後ノ状態デ ※印寸法及ビ 注 1) 条件が満足サレバ
時ハ ▽加工ハ 不用
3. ▽加工後 (▽加工ナシノ場合ハ 製缶後) 1 平面度が 注 1) 条件ヲ満足サナイ時ハ プレス加工ニヨリ調整スルコト。
4. マンガン鋼ハ 水ジン処理ヲシテモヲ使用ノコト。



- NOTE 1. ※ MARKED PORTION SHOULD BE FLAT.
(MAX. FLATNESS TOLERANCE IS 1mm AFTER METAL WORK.)
(MAX. FLATNESS TOLERANCE IS 0.2mm AFTER MACHINING.)
2. IF ※ MARKED DIMENSION AND THE CONDITION OF
NOTE 1 ARE SATISFIED, MACHINING (▽) IS NOT
NECESSARY.
3. IF THE FLATNESS TOLERANCE SHOWN IN "NOTE 1" IS
NOT SATISFIED AFTER METAL WORK, MODIFICATE
FACE BY PRESS MACHINE.
4. MATERIAL "HIGH MANGANESE STEEL" SHOULD
BE TREATED AS WATER TOUGHNESS.

- Not 1. ※ işaretli kısım düz olacaktır.
(Max düzlük toleransı metal işçiliğinden sonra 1mm)
(" " " işlemden sonra 0,2mm dir.)
2. Eğer ※ işaretli ölçü ve Not 1 deki durum
tatmin edici ise (▽) işlemi gerekli değildir.
3. Eğer Not 1 deki düzlük toleransı metal işçi-
liğinden sonra tatmin edici değilse yüzü
pres makinası ile tadil edin.
4. Yüksek manganezli çelik malzeme
suda sertleştirilecektir.

Aşınım 展開寸法 DEVELOPMENT



Liste no: L-A 0655

2C3T0471