

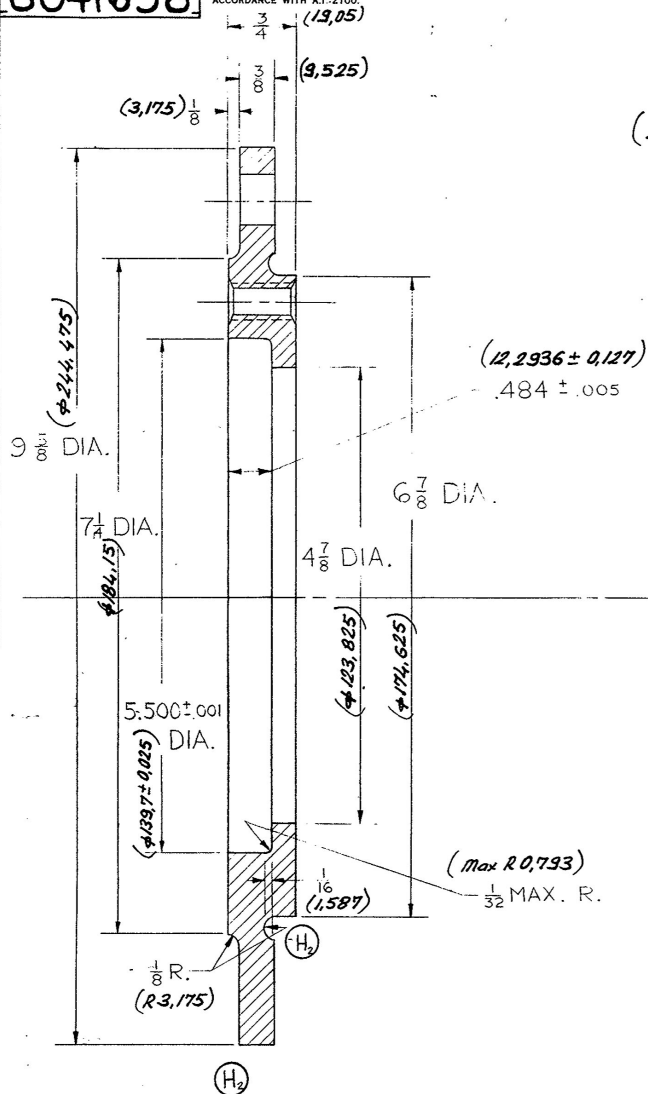
8041658

TOLERANCES ON ALL DIMENSIONS NOT SPECIFIED ON THE DRAWING TO BE IN ACCORDANCE WITH A.I. 2100.

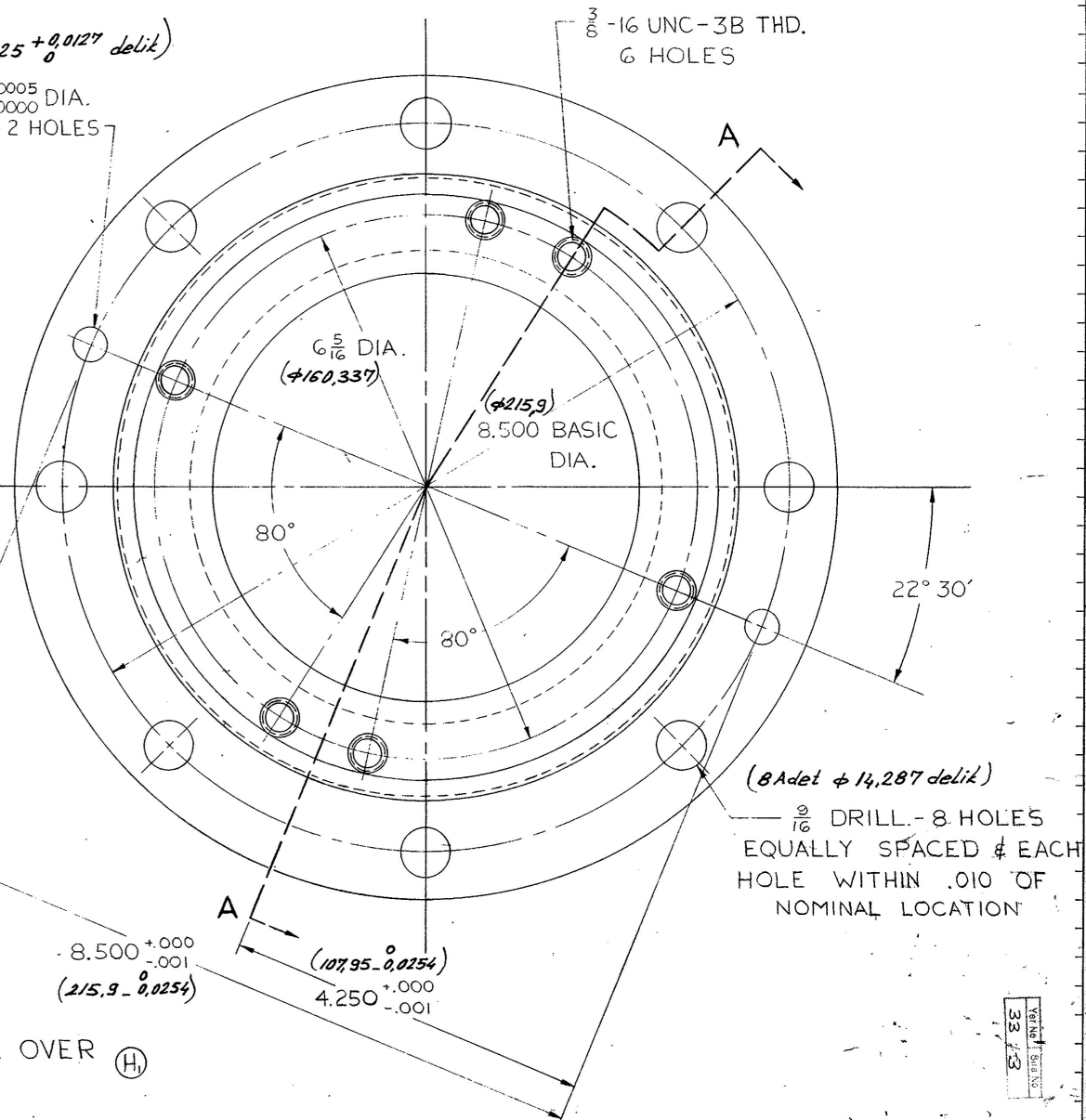
BREAK ALL SHARP CORNERS UNLESS OTHERWISE SPECIFIED.

COUNTERSINK ALL TAPPED HOLES 118° X ONE THIRD DEEP.

SURFACE FINISH SPECS. IS IN ACCORDANCE WITH G.M. ENGR. STDS.



SECTION A-A

FINISH ALL OVER (H₁)

R.F.C. NO.				REV. LET.				REVISION				DATE				BY				CK.				APV'D.			
R.F.C. NO.				REV. LET.				REVISION				DATE				BY				CK.				APV'D.			
FIRST USED ON				567																							

MATERIAL		M.S. 4361 STEEL		NAME OF PART		PART NO.		IT. NO.	
DR. STARKEY		DATE 3-15-39		ELECTRO-MOTIVE DIVISION		GENERAL MOTORS CORPORATION		LA GRANGE, ILLINOIS, U.S.A.	
CR. ZAITZ		DATE 3-15-39		COVER - SEAL					
SUP. PERVIER		DATE 3-15-39		DATE OF PRINT		PART NO.		8041658	
WELD.		MOD. ENGR.		ENGR. HNB		DATE 3-15-39			