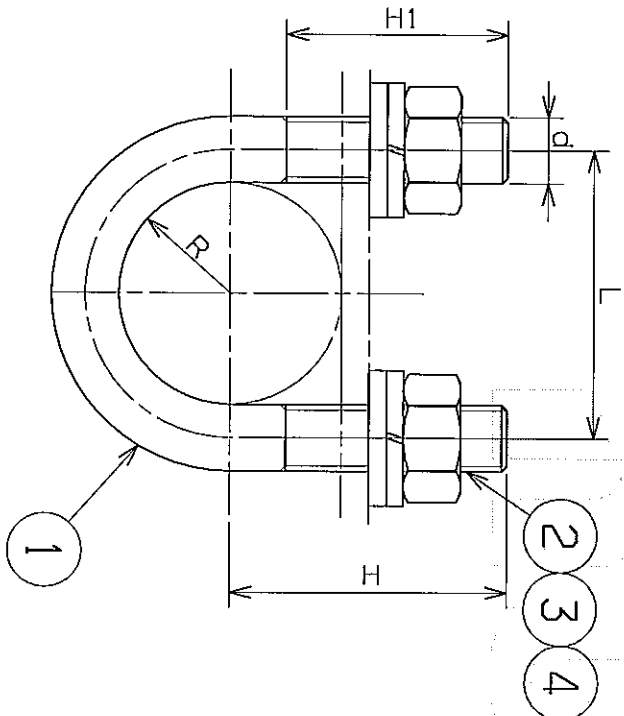


CLAMP-ASSY PART NO.	DESIG -NATION	PIPE DIAMETER	① U-BOLT										② NUT, HEX.	③ WASHER, SPR.	④ WASHER, PLAIN
			PART NO.	DIMENSION											
				R	d	L	H	H1							
CP610001-400	6(1/8)	10.5	CP610001-001	5.5	6	17	20	16	RS60401-007B(M6)	RS60801-006B(M6)	RS60809-001B(M6)				
CP610001-401	8(1/4)	13.8	CP610001-002	7	6	20	22	16	RS60401-007B(M6)	RS60801-006B(M6)	RS60809-001B(M6)				
CP610001-402	10(3/8)	17.3	CP610001-003	9	6	24	25	20	RS60401-007B(M6)	RS60801-006B(M6)	RS60809-001B(M6)				
CP610001-403	15(1/2)	21.7	CP610001-004	11	6	28	26	20	RS60401-007B(M6)	RS60801-006B(M6)	RS60809-001B(M6)				
CP610001-404	20(3/4)	27.2	CP610001-005	14	6	34	30	20	RS60401-007B(M6)	RS60801-006B(M6)	RS60809-001B(M6)				
CP610001-405	25(1)	34	CP610001-006	17	6	40	36	20	RS60401-007B(M6)	RS60801-006B(M6)	RS60809-001B(M6)				
CP610001-406	32(1 1/4)	42.7	CP610001-007	21.5	6	49	40	20	RS60401-007B(M6)	RS60801-006B(M6)	RS60809-001B(M6)				
CP610001-407	40(1 1/2)	48.6	CP610001-008	24.5	10	59	45	20	RS60401-009B(M10)	RS60801-008B(M10)	RS60809-001B(M10)				
CP610001-408	50(2)	60.5	CP610001-009	30.5	10	71	50	20	RS60401-009B(M10)	RS60801-008B(M10)	RS60809-001B(M10)				
CP610001-409	55(2 1/2)	76.3	CP610001-010	38.5	10	87	60	20	RS60401-009B(M10)	RS60801-008B(M10)	RS60809-001B(M10)				
CP610001-410	80(3)	89.1	CP610001-011	44.5	10	99	65	20	RS60401-009B(M10)	RS60801-008B(M10)	RS60809-001B(M10)				
CP610001-411	100(4)	114.3	CP610001-012	57.5	10	125	80	25	RS60401-009B(M10)	RS60801-008B(M10)	RS60809-001B(M10)				
CP610001-412	125(5)	139.8	CP610001-013	70	16	156	100	35	RS60401-011B(M16)	RS60801-010B(M16)	RS60809-001B(M16)				
CP610001-413	32(1 1/4)	42.7	CP610001-014	21.5	10	53	40	20	RS60401-009B(M10)	RS60801-008B(M10)	RS60809-003B(M10)				


NOTE

1. U-BOLT 길이 H는 워셔/스프링의 두께가 최대 4.5mm까지이고
너트 및 스프링의 외세를 포함 하도록 다음 기준으로하여 산출된 것임.
(1. THE LENGTH OF U-BOLT IS CALCULATED BASED ON MAX. 4.5MM OF
BRACKET'S THICKNESS AND THE LENGTH OF NUT/SPRING WASHER)



두께 T ~ 40 ~ 30 ~ 10 ~ 3 ~ 1.5	2 2 1 0.5 1	4 3 1.5 1 1
길이 L ~ 1500 ~ 800 ~ 400 ~ 200	- 4 3 2	7 5 3 2
외경 O.D. ~ 200 ~ 100	1.5 1	2 1.5
공차 Tolerance Grade A B	A B	B
주조 CASTING ~ 20M ~ 15M ~ 12M ~ 8M ~ 4M ~ 2M ~ 1M ~ 30	8 14 24 7 12 21 6 10 18 5 8 14 4 6 11 3 4 8 2 3 6 1 2 4 1 2 3	14 24 21 18 14 11 8 6 4 3
용접 WELDING ~ 20M ~ 15M ~ 12M ~ 8M ~ 4M ~ 2M ~ 1M ~ 30	- 6.0 18.0 - 5.0 7.0 - 4.0 6.0 - 3.0 5.0 - 2.0 4.0 - 1.2 3.0 - 0.8 2.0 - 0.3 0.8 - 0.2 0.5 - 0.1 0.2 - 0.05 0.1	18.0 7.0 6.0 5.0 4.0 3.0 2.0 4.0 2.0 3.0 2.0 0.8 0.5 0.2 0.1 0.2 0.1
기타 MACHINING Grade A B C	A B C	C

기 MARK	일 DATE	변 DETAIL OF REVISION(E, C ZONE)	설 E.C NO.	설 DGN	검 CHK	승 APP
-----------	-----------	------------------------------------	--------------	----------	----------	----------

4	SEE TABLE	WASHER, PLAIN, ROUND	SS400	2	0.00	
3	SEE TABLE	WASHER, SPRING	HS457	2	0.00	
2	SEE TABLE	NUT, HEXAGON	SS400	2	0.00	
1	SEE TABLE	BOLT, U-BOLT, HEX	SS400	1	0.00	
품번 NO.	부품 번호 PART NO.	품명 DESCRIPTION	재질 MATERIAL	수량 Q'TY	중량 W.T	비고 REMARKS
승인 APP		제원 MAT'L ASSY	U-BOLT, G-U TYPE			
검도 CHK		중량 G.W				
설계 DGN	S. M. LEE	도면 번호 DRG. NO	MS	CP610001	Ver. V00	
제도 DRG	2005. 09. 06					MC
SIZE		A3	SCALE			
			매수 SHEET 1 of 2			
참고 REF. NO. RTE00382		HYUNDAI Rotem 현대로템주식회사				
		년-PRJT				
		관리번호				